

# MAYORICA

## G X 2 1 0 0



Shown: GX2121

The concept of patchwork design provides a random and unique 'one-off' pattern. There are synergies with this style and modern companies where many departments and teams combine to reach business objectives.

Mayorica by TOLI was inspired to provide a flooring solution that can tell its own story in so many ways such as contemporary design and collaboration. The design is made up from 40 unique tiles to provide the total affect. The tiles are randomly packed offering uniqueness to each installation. Colour code GX2111 is a subtle yet classy greyscale design while the bold GX2121 can be used when a positive statement needs to be made in a vibrant environment.



GX2121

500mm

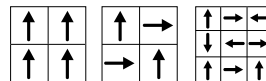
500mm

<b>YARN</b>	Solution Dyed Nylon
<b>FINISH</b>	Textured Loop Pile
<b>PILE WEIGHT</b>	700gsm (20.6oz)
<b>TILE DIMENSION</b>	500mm x 500mm
<b>TOTAL THICKNESS</b>	7.5mm

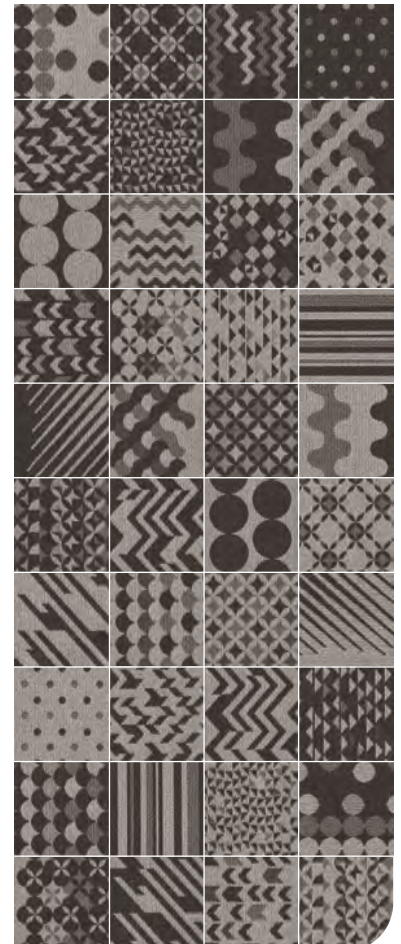
### PERFORMANCE



### INSTALLATION



GX2111



Shown: All GX2111