



PROOFED CANVAS

POLY / COTTON



Canvas is one of the earliest forms of industrial textiles and has been proven through decades of use. Over the years the traditional 100% woven cotton composition has been upgraded to include polyester for increased strength and longevity. The fundamental concept of polyester/cotton canvas is to provide a breathable yet waterproof woven textile.

Australian is renowned for having the best manufacturers of polyester/cotton canvas in the world. The Nolan Group are fortunate to be representing these world class manufacturers and offer the most comprehensive range of canvas products available.

### Key benefits of the Protex Canvas Collection

- Water resistant
- Breathable
- UV stabilised
- High Tear & Tensile Strength
- Mildew Resistant



By their very nature, woven fabrics are porous. This can be an advantage because it allows movement of air between the internal and external surfaces, minimising the likelihood of condensation and temperature differences. However, the obvious difficulty is preventing water penetration.



All Protex canvas ranges are made water repellent by finishing the manufacturing process with a propriety proofing. This provides a hydrophobic film on the fibres, which has the affect of altering their absorption characteristics, thus preventing capillary action or seepage. This provides the unique combination of water repellency whilst still being permeable to air and water vapour. The 'proofing process' should not be confused with the 'coating process' where an impervious film is applied to the canvas surface making it completely waterproof however the finished fabric cannot breathe whatsoever.



# BASECAMP

MEDIUM WEIGHT PROOFED CANVAS

Basecamp is a utility 12oz proofed polyester/cotton blended canvas that is suitable for a wide variety of medium duty applications.



BLACK

CHARCOAL

LIGHT GREY

NAVY

OLIVE

## FEATURES & BENEFITS

- Water Proof
- Rot Proof
- Breathable
- Made in Australia



\*Please note that the Basecamp available in WA has different low-abrasion finish compared to the range available on the East Coast. Contact the Perth branch for more details.

## PRODUCT SPECIFICATIONS

Weight: Loomstate	11.8oz (400gsm)
Weight: Finished	13.3oz (450gsm)
Content	52% Polyester/48% Cotton
Construction	Plain Weave
Finish	Proofed
Tear Strength: AS 2001.2.10	80N (Warp), 52N (Weft)
Tensile Strength: AS 2001.2.3	2500N (Warp), 1300N (Weft)
Dimensions	200cm wide x 50m rolls

# COOLABAH

LIGHT WEIGHT PROOFED CANVAS

Coolabah is a fine weave, light weight polyester/cotton blended canvas finished with the Dynaproof process. It has been specifically developed for the roofs and walls of the continental and family-style frame tents. Coolabah is also recommended as a high quality walling solution for campervans where a large amount of fabric needs to be folded into a compact area.



LIGHT SAND

BEIGE

LIGHT GREY

GREY

BLUE

OLIVE

## FEATURES & BENEFITS

- Water Proof
- Rot Proof
- Breathable
- Made in Australia



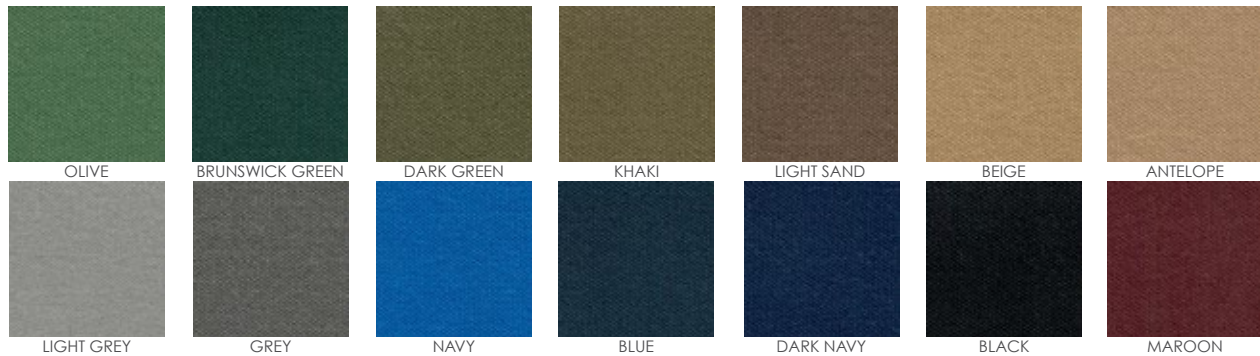
## PRODUCT SPECIFICATIONS

Weight: Loomstate	6.4oz (218gsm)
Weight: Finished	8.0oz (275gsm)
Content	65% Polyester/35% Cotton
Construction	Japara Weave
Finish	Dynaproofed
Tear Strength: AS 2001.2.10	39N (Warp), 28N (Weft)
Tensile Strength: AS 2001.2.3	1221N (Warp), 1087N (Weft)
Dimensions	204cm wide x 50m rolls

# BILLABONG

LIGHT-MEDIUM WEIGHT PROOFED CANVAS

Billabong is a light-medium weight polyester/cotton blended canvas finished with the Dynaproof process. It features a unique weave using fine denier yarns in a tightly woven construction. Billabong was specifically developed for use on the walls and roofs of both tenting and campervan applications.



## FEATURES & BENEFITS

- Water Proof
- Rot Proof
- Breathable
- Made in Australia



## PRODUCT SPECIFICATIONS

Weight: Loomstate	8.8oz (300gsm)
Weight: Finished	10.9oz (370gsm)
Content	65% Polyester/35% Cotton
Construction	Plain Weave
Finish	Dynaproofed
Tear Strength: AS 2001.2.10	66N (Warp), 42N (Weft)
Tensile Strength: AS 2001.2.3	1800N (Warp), 1300N (Weft)
Dimensions	204cm wide x 50m rolls

# 300 SUPERDUX®

LIGHT-MEDIUM WEIGHT PROOFED CANVAS

300 Superdux® is a light-medium weight polyester/cotton blended canvas, finished with the XLP proofing process. Typical applications include; tenting wall & roofs as well as general purpose covers and canopies. **Not available in WA**



## FEATURES & BENEFITS

- Water Proof
- Rot Proof
- Breathable
- Made in Australia



## PRODUCT SPECIFICATIONS

Weight: Loomstate	8.4oz (285gsm)
Weight: Finished	10.1oz (345gsm)
Content	65% Polyester/35% Cotton
Construction	Plain Weave
Finish	XLP Proofed
Tear Strength: AS 2001.2.10	65N (Warp), 45N (Weft)
Tensile Strength: AS 2001.2.3	1840N (Warp), 1300N (Weft)
Dimensions	200cm wide x 50m rolls

# DX12 MEDIUM WEIGHT PROOFED CANVAS

DX12 is a medium weight, general-purpose polyester/cotton blended canvas, finished with the Dynaproof process. It is suited to countless applications including; swags, marquee roofs and walls, temporary shelters, tarpaulins, trailer covers, annexe roofs and heavy-duty campervan roofs and walls.



## FEATURES & BENEFITS

- Water Proof
- Rot Proof
- Breathable
- Made in Australia



## PRODUCT SPECIFICATIONS

Weight: Loomstate	12.1oz (410gsm)
Weight: Finished	14.9oz (505gsm)
Content	52% Polyester/48% Cotton
Construction	Plain Weave
Finish	Dynaproofed
Tear Strength: AS 2001.2.10	116N (Warp), 68N (Weft)
Tensile Strength: AS 2001.2.3	2195N (Warp), 1523N (Weft)
Dimensions	204cm wide x 50m rolls

\*Product specification data is available upon request. Results differ marginally from the standard range.

# 373 SUPERDUX<sup>®</sup> MEDIUM WEIGHT PROOFED CANVAS

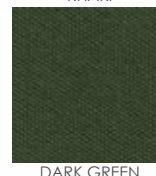
373 Superdux<sup>®</sup> is a medium weight, general purpose polyester/cotton blended canvas finished with the XLP proofing process. Typical applications include; tenting and camper annexe roofs, swags, canopies, camper trailer roofs and walls, tarpaulins, trailer covers and most general purpose applications.

**Not available in WA**



## FEATURES & BENEFITS

- Water Proof
- Rot Proof
- Breathable
- Made in Australia

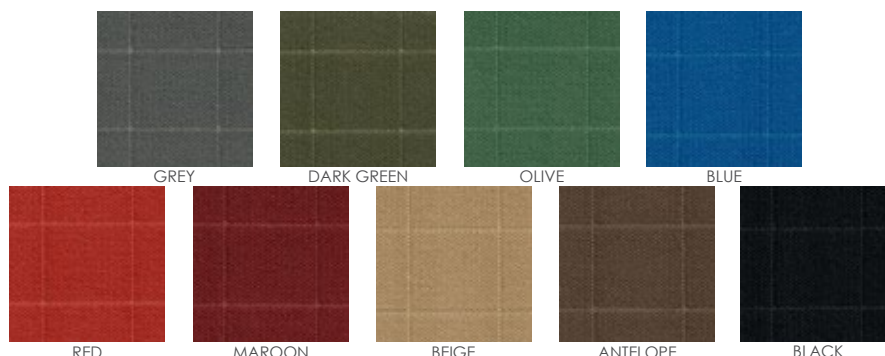


## PRODUCT SPECIFICATIONS

Weight: Loomstate	12.7oz (430gsm)
Weight: Finished	15.2oz (515gsm)
Content	52% Polyester/48% Cotton
Construction	Plain Weave
Finish	XLP Proofed
Tear Strength: AS 2001.2.10	106N (Warp), 66N (Weft)
Tensile Strength: AS 2001.2.3	2415N (Warp), 1765N (Weft)
Dimensions	200cm wide x 50m rolls

# BULLDUCK HEAVY DUTY TEAR-STOP PROOFED CANVAS

Bullduck TT is a polyester/cotton blended canvas that features a high tenacity core-spun yarn woven in a tear-stop weave. The loomstate fabric is finished with the Dynaproof process. It has been specifically developed for heavy duty applications such as truck tarpaulins where additional strength is required.



## FEATURES & BENEFITS

- Water Proof • Rot Proof • Breathable • Rip-Stop construction • Made in Australia



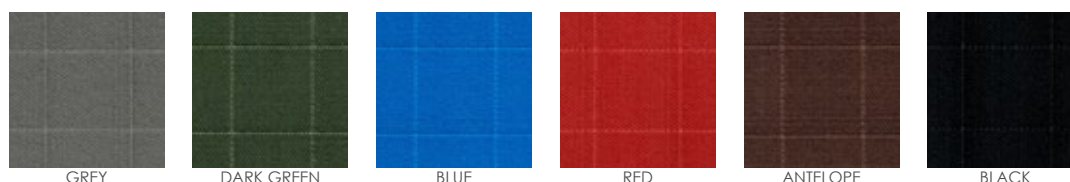
## PRODUCT SPECIFICATIONS

Weight: Loomstate	12.6oz (426gsm)
Weight: Finished	16.0oz (535gsm)
Content	50% Polyester/50% Cotton body with Core-spun Tear-stop weave
Construction	Tear-stop Weave
Finish	Dynaproofed
Tear Strength: AS 2001.2.10	207N (Warp), 125N (Weft)
Tensile Strength: AS 2001.2.3	2589N (Warp), 1644N (Weft)
Dimensions	204cm wide x 50m rolls

# 440 SUPERSTOP RIPSTOP® HEAVY DUTY TEAR-STOP PROOFED CANVAS

440 Superstop Ripstop® is polyester/cotton blended canvas that features high tenacity core-spun yarn woven in a rip-stop weave. The loomstate fabric is finished with the XLP proofing process which imparts excellent water and rot proofing characteristics. Typical applications include; hire & transport tarpaulins, utility canopies, horse rugs and other general purpose applications.

**Not available in WA**



## FEATURES & BENEFITS

- Water Proof • Rot Proof • Breathable • Rip-Stop construction • Made in Australia



## PRODUCT SPECIFICATIONS

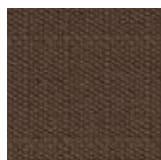
Weight: Loomstate	12.7oz (430gsm)
Weight: Finished	15.6oz (530gsm)
Content	52% Polyester/48% Cotton body with Core-spun Tear-stop weave
Construction	Tear-stop Weave
Finish	XLP Proofed
Tear Strength: AS 2001.2.10	355N (Warp), 270N (Weft)
Tensile Strength: AS 2001.2.3	2350N (Warp), 1800N (Weft)
Dimensions	200cm wide x 55m rolls



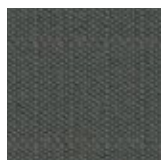
# CS12 T/S

PREMIUM QUALITY HEAVY DUTY TEAR-STOP PROOFED CANVAS  
WOVEN WITH 100% CORE-SPUN YARN

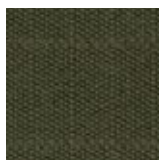
CS12 T/S is a premium quality tear-stop canvas woven using 100% high tenacity core-spun yarn to provide exceptional strength. Finished with the Dynaproof process, CS12 T/S is the obvious choice when strength and durability is paramount. Typical applications include large truck & trailer tarpaulins.



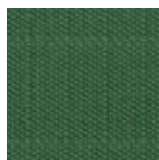
ANTELOPE



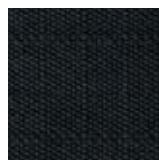
GREY



DARK GREEN



OLIVE



BLACK



BLUE

## FEATURES & BENEFITS

- Water Proof • Rot Proof • Breathable • Rip-Stop Construction • Made in Australia • 100% Corespun Yarn



## PRODUCT SPECIFICATIONS

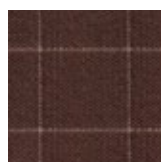
Weight: Loomstate	13.3oz (450gsm)
Weight: Finished	17.0oz (575gsm)
Content	100% High Tenacity Core-spun Yarn
Construction	Tear-stop Weave
Finish	Dynaproofed
Tear Strength: AS 2001.2.10	250N (Warp), 190N (Weft)
Tensile Strength: AS 2001.2.3	3200N (Warp), 2870N (Weft)
Dimensions	204cm wide x 50m rolls

# 411 KORDUX RIPSTOP®

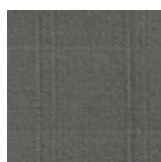
PREMIUM QUALITY HEAVY DUTY  
TEAR-STOP PROOFED CANVAS WOVEN  
WITH 100% CORE-SPUN YARN

411 Kordux Ripstop® is a premium quality rip-stop canvas woven with a high tenacity core-spun yarn to provide exceptional strength. It is finished with the XLP proofing process and is suitable for applications where strength and durability are the key criteria. Typical applications include large truck and trailer tarpaulins.

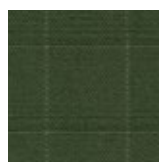
**Not available in WA**



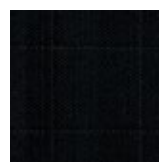
ANTELOPE



GREY



DARK GREEN



BLACK



BLUE



RED

## FEATURES & BENEFITS

- Water Proof • Rot Proof • Breathable • Rip-Stop Construction • Made in Australia • 100% Corespun Yarn



## PRODUCT SPECIFICATIONS

Weight: Loomstate	14.4oz (490gsm)
Weight: Finished	15.6oz (530gsm)
Content	100% High Tenacity Core-spun Yarn
Construction	Rip-stop Weave
Finish	XLP Proofed
Tear Strength: AS 2001.2.10	360N (Warp), 270N (Weft)
Tensile Strength: AS 2001.2.3	3500N (Warp), 2800N (Weft)
Dimensions	200cm wide x 55m rolls



**Nolan Group**  
Your Textile Partner For Success

**1300 35 75 85**

**Nolans.com.au**

**SYDNEY**

3 Bradford Street, Alexandria

**NEWCASTLE**

16 Ironbark Close, Warabrook

**BRISBANE**

14 Lions Park Drive, Yatala

**MELBOURNE**

7 Conifer Crescent, Dingley Village

**ADELAIDE**

489 Cross Keys Road, Cavan

**PERTH**

22 Hazelhurst Street, Kewdale

