



CLEAR-CHEK

(Indent Orders Only)

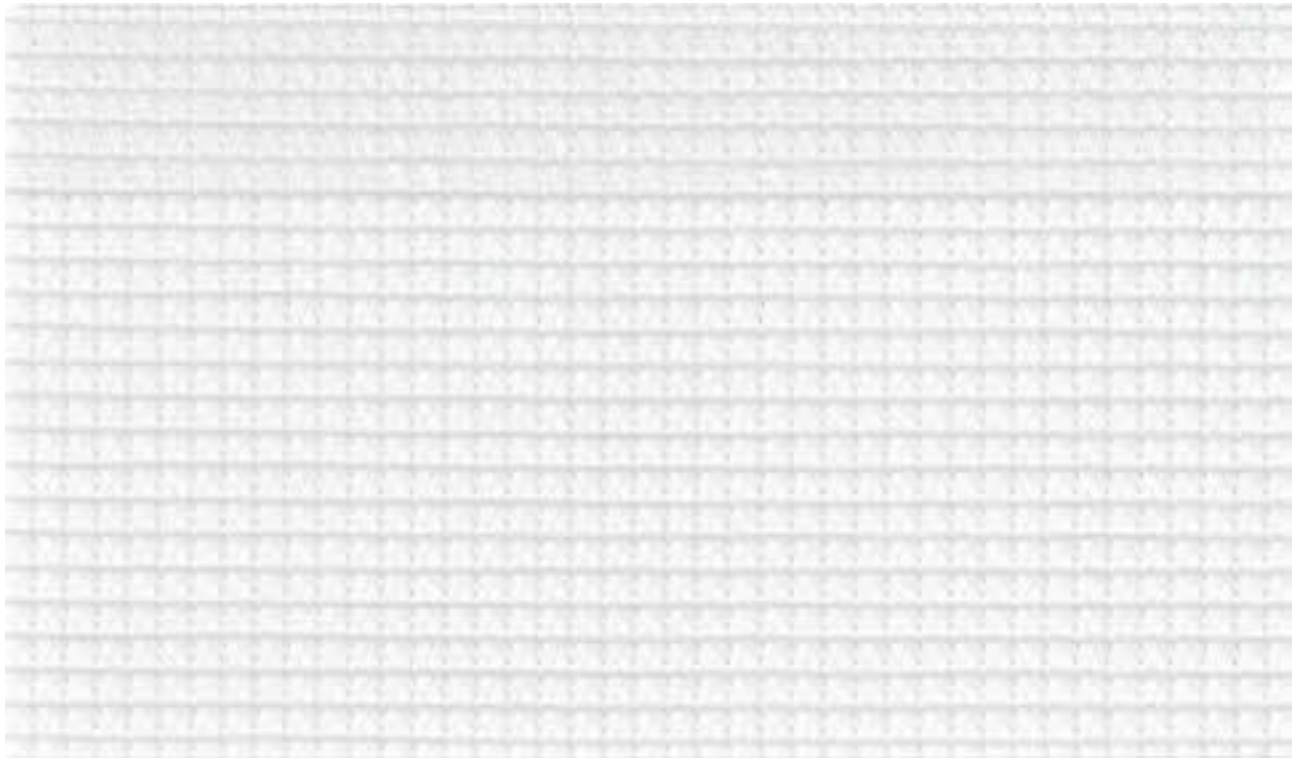
Sure-Chek Clear-Chek is a transparent mattress cover designed for heavy duty application. Its primary feature is to provide internal mattress visibility without removing the cover. Sure-Chek Clear-Chek incorporates all the features for which the Sure-Chek range of fabrics is world renown.

Product Features

- Transparent
- Fire Retardant
- Easy to Maintain
- High Tear Resistance
- Hypoallergenic / Non-irritating
- Anti-static
- Fluid Proof
- Anti-microbial Fabric Protection
- Stain Resistant

Typical Applications

- Heavy Duty Mattress Covers
- Correctional Centres
- Institutional Facilities



Roll Width: 208cm

Standard Roll Length: 91.4m

Property	Standard/Test Method	Result
Total Weight	ASTM D3776	370g/m ²
Tear Strength	ASTM D2261	Warp: 95lb Weft: 107lb
Breaking Strength	ASTM D5034	Warp: 165lb Weft: 160lb
Adhesion	ASTM D751 (Free Peel)	11.5lb/2"
Fire Retardant	ASTM D6413	Pass
Hydrostatic Head	ASTM D751/A	160psi
Antimicrobial Resistance	AATCC 147 ISO 22196	Pass



Care & Maintenance

Healthcare Fabrics require regular care & maintenance. If the recommended instructions are followed, the end user can expect to maximise the fabrics potential life and maintain a hygienic environment.

General Cleaning

Regularly clean **Sure-Chek** Healthcare Fabrics with a mild solution of phenolic based cleaner and water. Rinse thoroughly with fresh water and wipe dry.

Spot Cleaning

For difficult spills and stains, prepare a strong solution of phenolic based commercial cleaner. Using a soft bristle brush and solution, clean the affected area. Rinse thoroughly with fresh water and wipe dry.

Disinfection

It is common to disinfect surfaces in a healthcare environment. Using a water/bleach solution of 10:1, clean the entire mattress. The bleach must not have a sodium hypochlorite level in excess of 5%. Disinfectants applied at full concentration will decrease the life of **Sure-Chek Healthcare Fabrics**. Rinse thoroughly with fresh water and wipe dry.

Notes

- Never exceed the cleaning manufacturers concentration recommendations.
- Do not use abrasive cloths or cleaners.
- Do not use aggressive cleaners or chemicals.
- **Sure-Chek** Healthcare Fabrics are not autoclavable.
- When in doubt, contact your local Nolan Group branch for further advice.