



Acoustic Colours

- 3D tiles S-5.32 in Avocado, Porcelain, Blush and Civic

- The White Room, New Zealand



Leaders in Acoustics

We're specialists in acoustic products that enhance wellbeing and comfort, whilst improving learning outcomes and productivity by reducing reverberated noise and echo.

Made in Australia and New Zealand, our acoustic products and global operations are proudly 100% carbon neutral in everything we do.

It's what the future sounds like.
And, now it looks fabulous too.

Autex Colour Selector



● Acros*



● Falling Water*



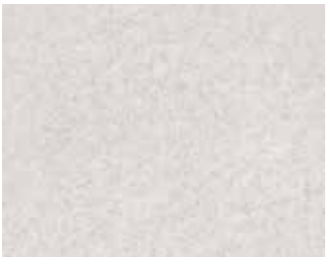
● Myst



● Porcelain



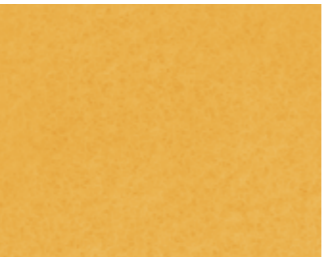
● Stonewash



● Savoye*



● Beehive*



● Senado*



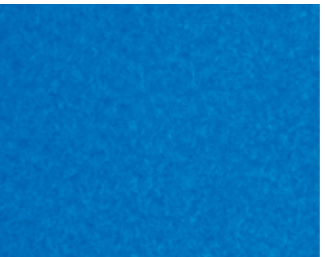
● Sage



● Atlantis



● Calypso



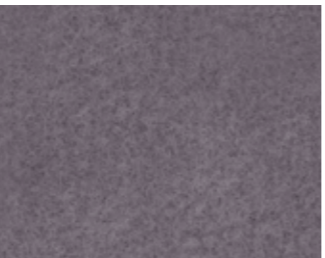
● Electric Blue



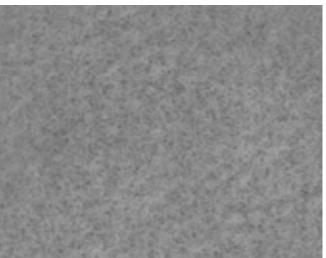
● Opera*



● Parthenon*



● Cavalier*



● Flatiron*



● Spearmint



● Lime



● Jade



● Granny Smith



● Empire*



● Gherkin*



● Petronas*



● Tree House*



● Simba



● Chilli Red



● Vintage



● Blazing Red



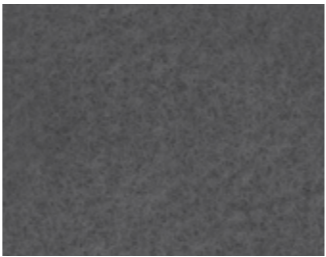
● Sargazo*



● Pinnacle*



● Muralla*



● Herald*



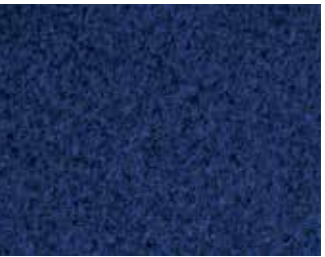
● Koala



● Bark



● Octane



● Ink

- 36 colours in smooth or velour finish for Vertiface® & Quietspace® Panel.
- Composition™ - velour finish
- Symphony® - smooth finish



● Acros*

Cube™



● Falling Water*

Cube™

- 21 colours for:
Cube™ wall and ceiling panels,
Horizon™, Frontier™, Groove and Vicinity™
- 17 *crossover colours
that co-ordinate with Vertiface®



● Savoye*

Cube™



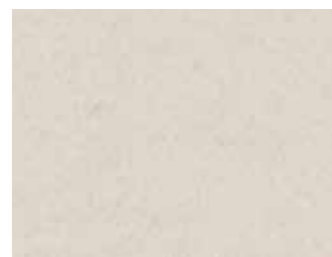
● Beehive*

Cube™



● Senado*

Cube™



● Opera*

Cube™



● Parthenon*

Cube™



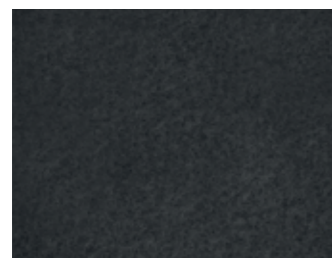
● Cavalier*

Cube™



● Flatiron*

Cube™



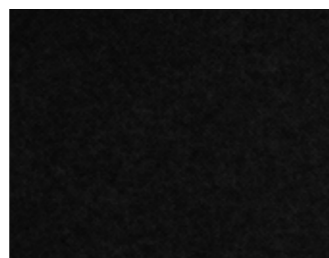
● Empire*

Cube™



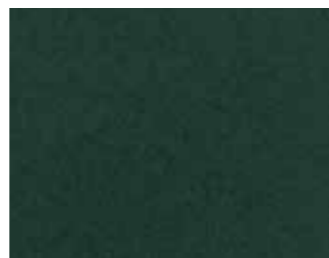
● Gherkin*

Cube™



● Petronas*

Cube™



● Tree House*

Cube™



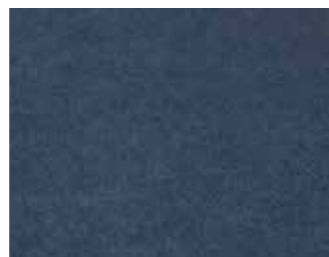
● Sargazo*

Cube™



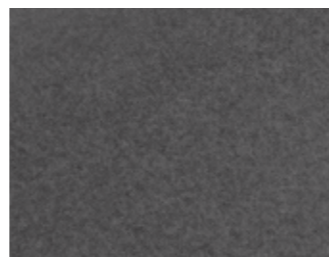
● Pinnacle*

Cube™



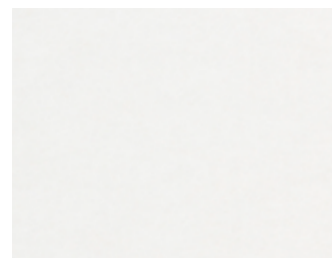
● Muralla*

Cube™



● Herald*

Cube™



● Pavilion

Cube™



● Rosada

Cube™



● Zenith

Cube™



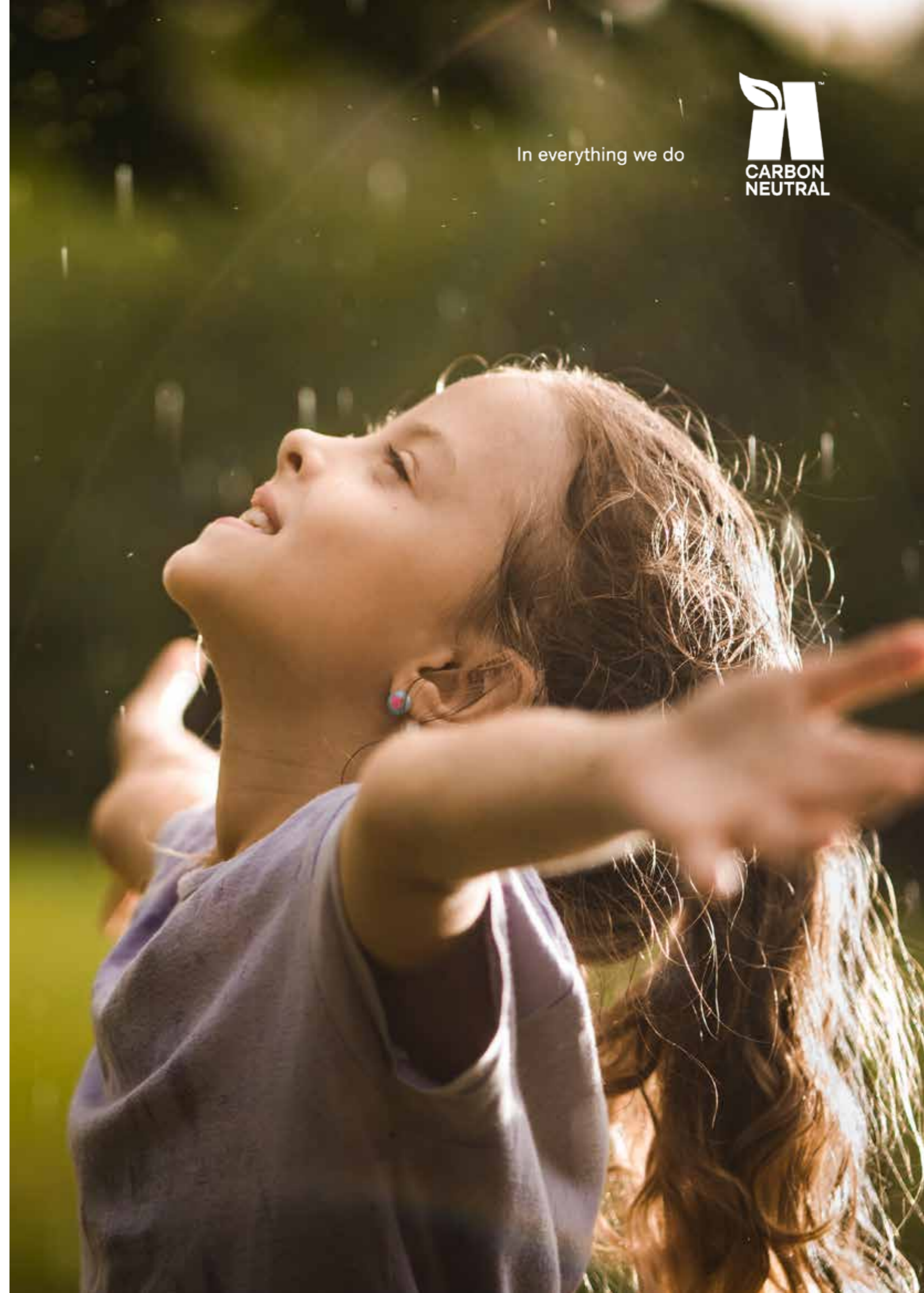
● Ironbank

Cube™



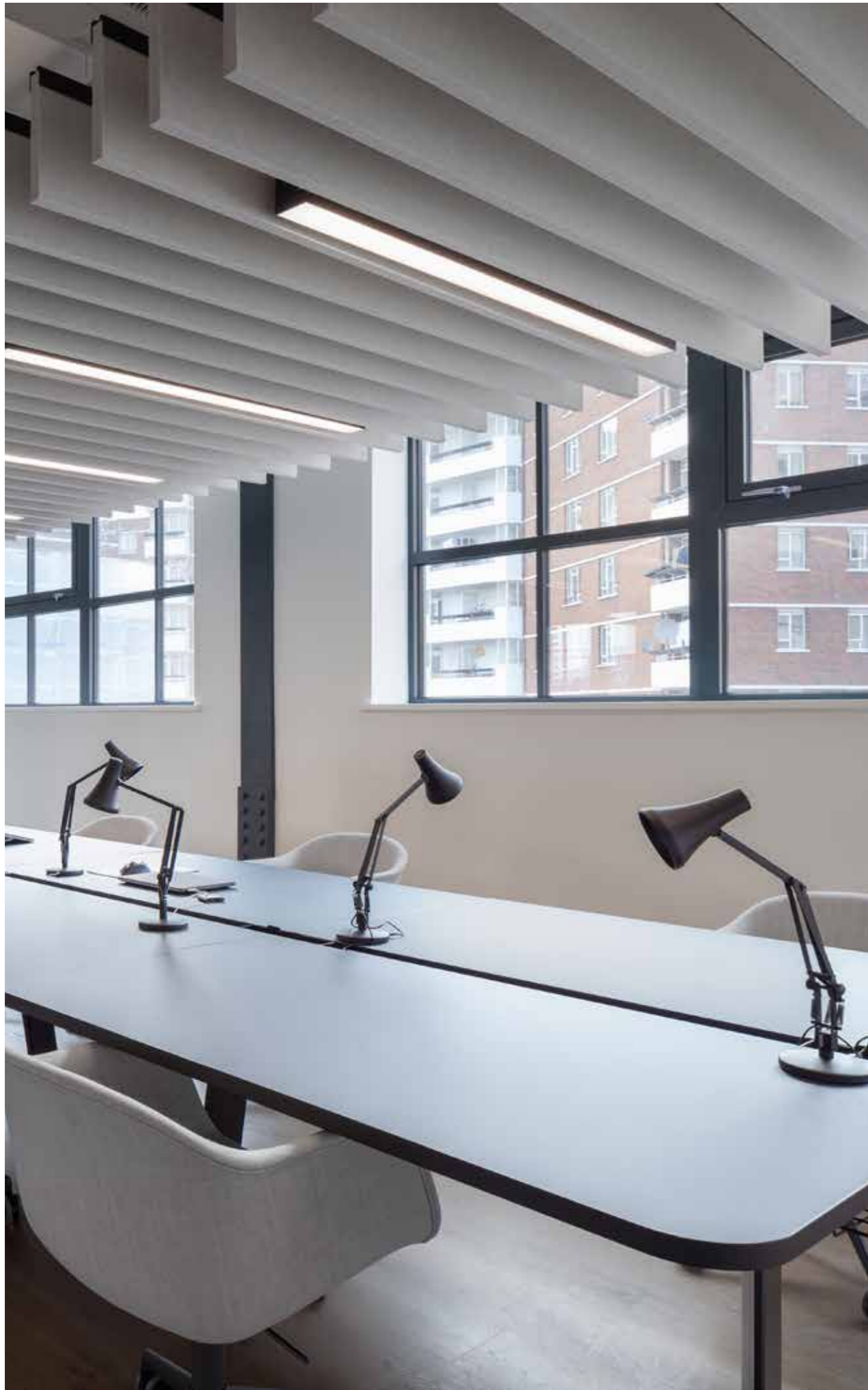
All our acoustic products and global operations are carbon neutral. Because there's nothing more beautiful than the future.

In everything we do



● Made in Australia and New Zealand

● Project: Autex London showroom
Product: Frontier™ 24mm fins in Savoye - Style Tundra
Architects: Tp Bennett
Location: London, UK



Cube™ and Vertiface®

- 17 *crossover colours for walls and ceilings



● Acros* Cube™



Vertiface®



● Falling Water* Cube™



Vertiface®



● Savoye* Cube™



Vertiface®



● Beehive* Cube™



Vertiface®



● Senado* Cube™



Vertiface®



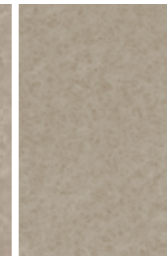
● Opera* Cube™



Vertiface®



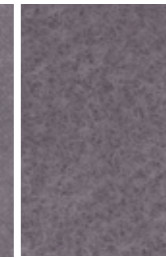
● Parthenon* Cube™



Vertiface®



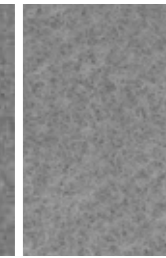
● Cavalier* Cube™



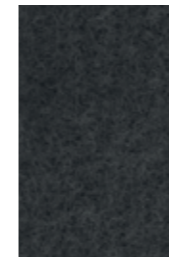
Vertiface®



● Flatiron* Cube™



Vertiface®



● Empire* Cube™



Vertiface®



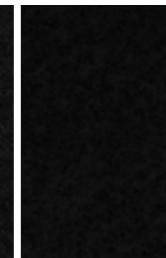
● Gherkin* Cube™



Vertiface®



● Petronas* Cube™



Vertiface®



● Tree House* Cube™



Vertiface®



● Sargazo* Cube™



Vertiface®



● Pinnacle* Cube™



Vertiface®



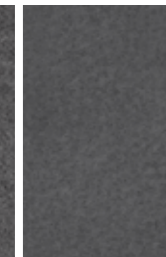
● Muralla* Cube™



Vertiface®








● Herald* Cube™



Vertiface®

Autex Acoustics® Colour Collection

Vertiface® Wall Coverings	Finish options	Colours	Sizes	NRC	Description	Install	About
	Velour <ul style="list-style-type: none">• Velcro receptive• Pinnable, self-healing Smooth <ul style="list-style-type: none">• Pinnable, self-healing	36 colours <ul style="list-style-type: none">• Co-ordinates with 17 Cube™ *Crossover colours	Thickness <ul style="list-style-type: none">• 3-4mm	n/a	Roll <ul style="list-style-type: none">• 100% PET• Min. 80% recycled• Moisture, mould• Impact resistant	<ul style="list-style-type: none">• Education• Hospitality• Office• Medical• Retail• Aged Care• Health Care• Government• Public Spaces• Museums• Galleries• Housing• Sports Facilities• Aquatic Centres• Fitness Centres• Creative Spaces	Durable and decorative, Vertiface® can be used as a furnishing fabric wall and panel lining or overlay.
Quietspace® Walls and Ceilings		Nude <ul style="list-style-type: none">• Safe to touch• Impact resistant Velour <ul style="list-style-type: none">• Velcro receptive• Pinnable, self-healing Smooth <ul style="list-style-type: none">• Pinnable, self-healing	3 base colours <ul style="list-style-type: none">• Nude White• Nude Grey• Nude Black + 36 colours	Thickness <ul style="list-style-type: none">• 25mm• 50mm• 75mm• 100mm	NRC <ul style="list-style-type: none">• 0.85• 1.00• 1.00• 1.00	Roll and Panel <ul style="list-style-type: none">• 100% PET• Min. 45% recycled• Moisture, mould• Impact resistant	Quietspace® offers the highest acoustic and thermal performance across 4 panel thicknesses. It has a hard, impact resistant face and can be overlaid with any of the 36 Vertiface® colours in smooth or velour finish.
Composition® Walls		Velour <ul style="list-style-type: none">• Velcro receptive• Pinnable, self-healing	36 colours <ul style="list-style-type: none">• White core	Thickness <ul style="list-style-type: none">• 10-12mm	NRC <ul style="list-style-type: none">• 0.40	Roll <ul style="list-style-type: none">• 100% PET• Min. 60% recycled• Moisture, mould• Impact resistant	Composition® is a high performing impact resistant acoustic wall covering and a great alternative to paint or wallpaper.
Symphony® Walls		Smooth <ul style="list-style-type: none">• Pinnable, self-healing	36 colours <ul style="list-style-type: none">• Black core	Thickness <ul style="list-style-type: none">• 10-12mm	NRC <ul style="list-style-type: none">• 0.40	Roll and Panel <ul style="list-style-type: none">• 100% PET• Min. 60% recycled• Moisture, mould• Impact resistant	The installation options for all Autex Acoustic® products are limitless Symphony® is a high performing impact resistant acoustic wall covering and a great alternative to paint or wallpaper.
Cube™ Walls, Ceilings and Panels		Smooth <ul style="list-style-type: none">• Pinnable	21 colours <ul style="list-style-type: none">• Solid core• Co-ordinates with 17 Vertiface® *Crossover colours	Thickness <ul style="list-style-type: none">• 12mm• 24mm	NRC <ul style="list-style-type: none">• 0.45-0.70 +• 0.70-0.80 +	Panel <ul style="list-style-type: none">• 100% PET• Min. 60% recycled• Moisture, mould• Impact resistant• Cut and print options• Groove options	Lightweight with high impact resistance, Cube™ is a semi-rigid, solid-core acoustic panel. Cube™ can be used on walls, ceilings, decorative panels, and used for highly noise reducing fins and baffles in vertical ceiling systems.



Bespoke Acoustics Solutions

Autex Acoustics® offers custom design capabilities that are limited only by your imagination. Solid core Cube™ will cut to any shape and configuration, whilst Composition® and Symphony® can be edged to create tactile, intricate designs.

The choice is yours.

Autex Acoustics® also offers Acoustic Timber™, print, pattern and solid colour print to further extend your design possibilities. Find what you've been looking for at www.autexacoustics.com.au



**Autex
Acoustics®**

● **Australia**

VIC, TAS, SA
285 Swan St
Richmond
VIC 3121
Phone 03 9450 6700
Freephone 1800 678 160

NSW, ACT
Unit 2, 10 Hill Rd
Lidcombe
NSW 2141
Phone 02 9729 6100

QLD, NT
68 Business St
Yatala
QLD 4207
Phone 07 3001 3000

WA
Unit 1, 398C Victoria Rd
Malaga
WA 6090
Phone 08 9355 1911

Customer Service 1800 678 160 www.autexacoustics.com.au

● **New Zealand**

Autex Industries Ltd
702-718 Rosebank Rd
Private Bag 19988
Avondale 1746, Auckland
Phone +64 800 428 839
Freephone +64 9 828 5810

● **United Kingdom**

Autex Acoustics Ltd
Unit J4, Lowfields Way
Lowfields Business Park
Elland, West Yorkshire
HX5 9DA
Phone +44 142 241 8899

● **United States**

Autex Acoustics LLC
1630 Dan Kipper Dr
Riverside CA 92507
Phone +1 424 203 1813



Autex Acoustics® products are carbon neutral and contribute to WELL, LEED, Green Star & BREEAM certification. Contact your Autex Acoustics® specification manager to hear how we can support your low carbon goals.

Autex is an ISO certified organisation encompassing Quality (ISO 9001), Environmental (ISO 14001), & Health and Safety (ISO 45001). Brand names and logos are registered or unregistered trademarks owned or used under license by Autex Industries Limited. Swatches featured are representative of the final product colours as close as the printing process allows. Please refer to actual samples prior to ordering. This brochure uses low environmental impact FSC certified pulps, manufactured in a facility that is chlorine free and ISO 14001 Environmental Management System accredited. Emissions have been offset and this brochure is fully recyclable and carbon neutral. © Copyright 2022 Autex Industries Ltd. All Rights Reserved.