





The perfect pairing

Uniting contemporary First Nations design and acoustic functionality, the Autex Acoustics® x Willie Weston collection has been curated for commercial, education, and government spaces.

Locally manufactured on Cube™ and Quietspace® Panel, the range is comprised of eight designs in 21 colourways and is entirely carbon neutral.

The specification of each design contributes to fair and equitable income for each artist via Willie Weston, a profit-for-purpose business working in partnership with First Nations artists to support the integration of contemporary First Nations design into the built environment.

Willie Weston is a member of the Indigenous Art Code, an organisation that works to preserve and promote ethical trade in First Nations art. Autex Acoustics is proud to collaborate with Willie Weston to support First Nations artists and communities across Australia.

● Sugarbag Dreaming
Saltbush
Rosie Ngwarraye Ross





Eight unique designs

Features and benefits:

- Combining First Nations design with high performance acoustic solutions
- Carbon neutral
- NRC 0.45 - 0.85
- Available in 6 mm, 12 mm, 24 mm, and 25 mm thicknesses
- Available in 2400 mm, 2700 mm, and 3000 mm lengths
- Group 1 fire rating
- Safe, water-based, UV cured ink
- Locally manufactured in Australia

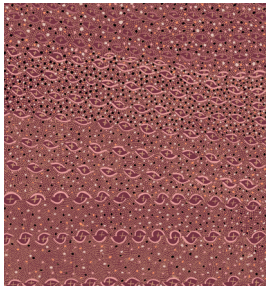
Applications:

- Designed for use in a range of interior spaces
- Suitable for wall and ceiling applications
- Recommended for application in non-contact areas only

For full details contact your
account manager.



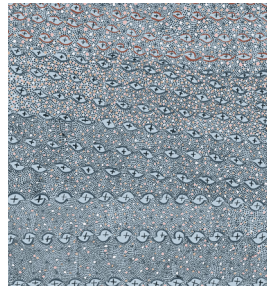
The collection



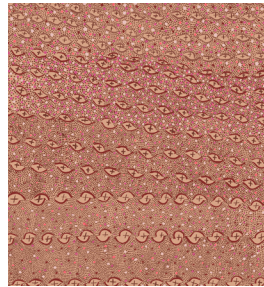
Durrmu (KK)
'Berry'



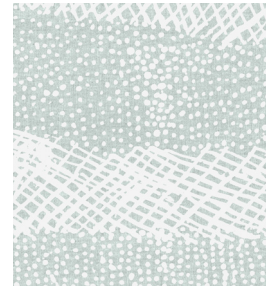
Durrmu (KK)
'Obsidian'



Durrmu (KK)
'Pippi'



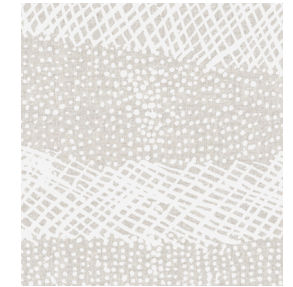
Durrmu (KK)
'Terra'



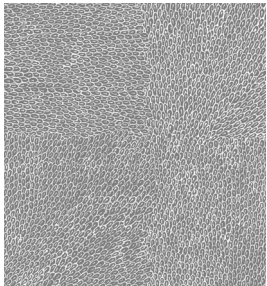
Jilamara
'Inlet'



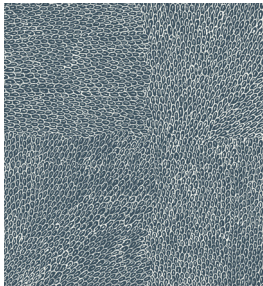
Jilamara
'Sand'



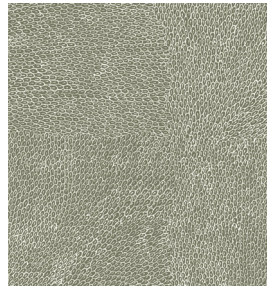
Jilamara
'Stone'



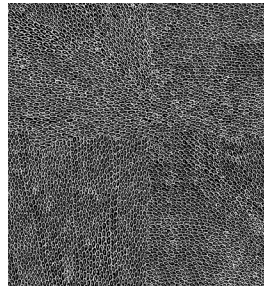
Native Seeds
'Cassia'



Native Seeds
'Mineral'



Native Seeds
'Olive'



Native Seeds
'Midnight'



Pandanus
'Stone'



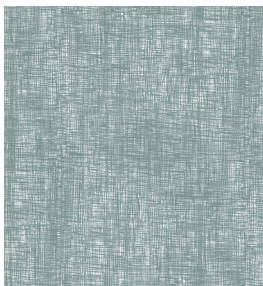
Pandanus
'Eucalypt'



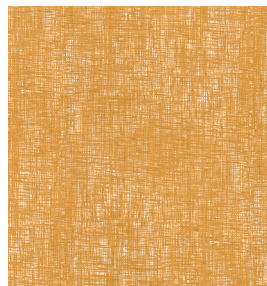
Sugarbag Dreaming
'Ghost Gum'



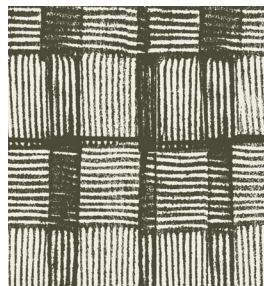
Sugarbag Dreaming
'Saltbush'



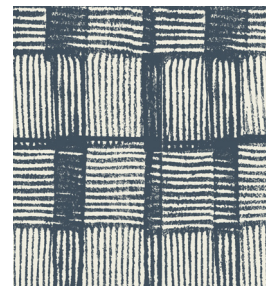
Syaw (Fish Net)
'Sea Spray'



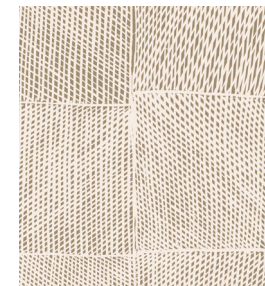
Syaw (Fish Net)
'Woollybutt'



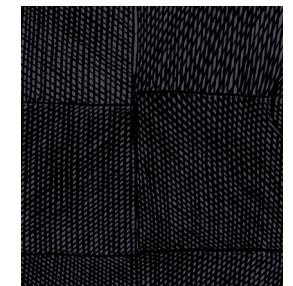
Water Levels
'Moss'



Water Levels
'Marine'



Wak Wak
'Mud Flats'



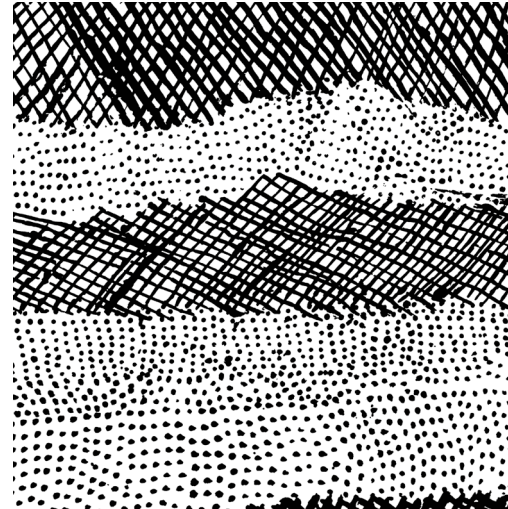
Wak Wak
'Storm'

The artists



Kathleen Korda

Born and educated at the Daly River Mission, Kathleen Korda now lives at Peppimenarti (NT) where her mother and grandmother taught her to weave baskets, string bags, and fish nets. She received a Highly Commended Award in the Togart Art Awards in 2013.



Jean Baptiste Apuatimi

Tiwi artist Jean Baptiste Apuatimi 1940-2013 is internationally acclaimed as a painter, carver, and printmaker. Her work is held in public and private collections all over the world, including the British Museum (UK), Seattle Museum of Art (USA) and National Museum of Women in the Arts (USA).



Jean Ngwarraye Long

Jean Ngwarraye Long was born in 1963 and has lived in Ampilatwatja (NT) all her life. She has exhibited at ArtKelch, Germany (2015), Flinders Lane Gallery, Melbourne (2018), Suzanne O'Connell Gallery, Brisbane (2018), and was also a finalist in the 40th Alice Art Prize, Alice Springs, (2018).



Osmond Kantilla

Osmond Kantilla (b. 1966) is a master screen printer from the Tiwi Islands. His country is Wurruranku and his skin group is Marntimapila (Stone). His work is held in numerous collections, including the National Museum of Australia, the Powerhouse Museum, and the Art Gallery of South Australia.

The artists



Rosie Ngwarraye Ross

Born in 1951 near Amaroo Station, Northern Territory, Rosie Ngwarraye Ross depicts the bush medicine plants and wild flowers from around her country near Ampilatwatja. She has a bold expressive style and often omits the sky from her compositions, combining both aerial and frontal views.



Annunciata Nunuk Wilson

Annunciata Nunuk Wilson of Peppimenarti (NT) was born c. 1970, the eldest daughter of the esteemed artist Regina Pilawuk Wilson. Annunciata paints durrmu (dot body painting) and has recently been experimenting with sun mat, basket stitch, and merrepen leaf designs. Syaw means Fish Net.



Susan Marawarr

Susan Marawarr (b. 1967) is a printmaker, sculptor, weaver, and bark painter from Maningrida (NT). She has exhibited at Gallery Gabrielle Pizzi, Melbourne (2011) and Suzanne O'Connell Gallery, Brisbane (2018). Her work is in the Art Gallery of Western Australia, Museum of Contemporary Art and the National Gallery of Australia.



Lee-Anne Williams

Lee-Anne Williams, from Fitzroy Crossing (WA), is of the Bunuba and Wangkatjunka language groups. She began her career painting boab nuts, moving onto screen and lino printing on textiles before becoming a founding member of the 2017 Design Within Country fashion project.

Autex Acoustics x Willie Weston Durrmu Collection

Durrmu (KK)

by Kathleen Korda

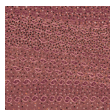
Durrmu (KK) represents traditional body painting designs applied to male and female faces and torsos for ceremonial dance. The dots are referred to as durrmu — which also means painting.

Panel repeat:
A

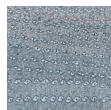
Lengths:
2400 mm
2700 mm
3000 mm

Custom lengths available.

Colours



'Berry'



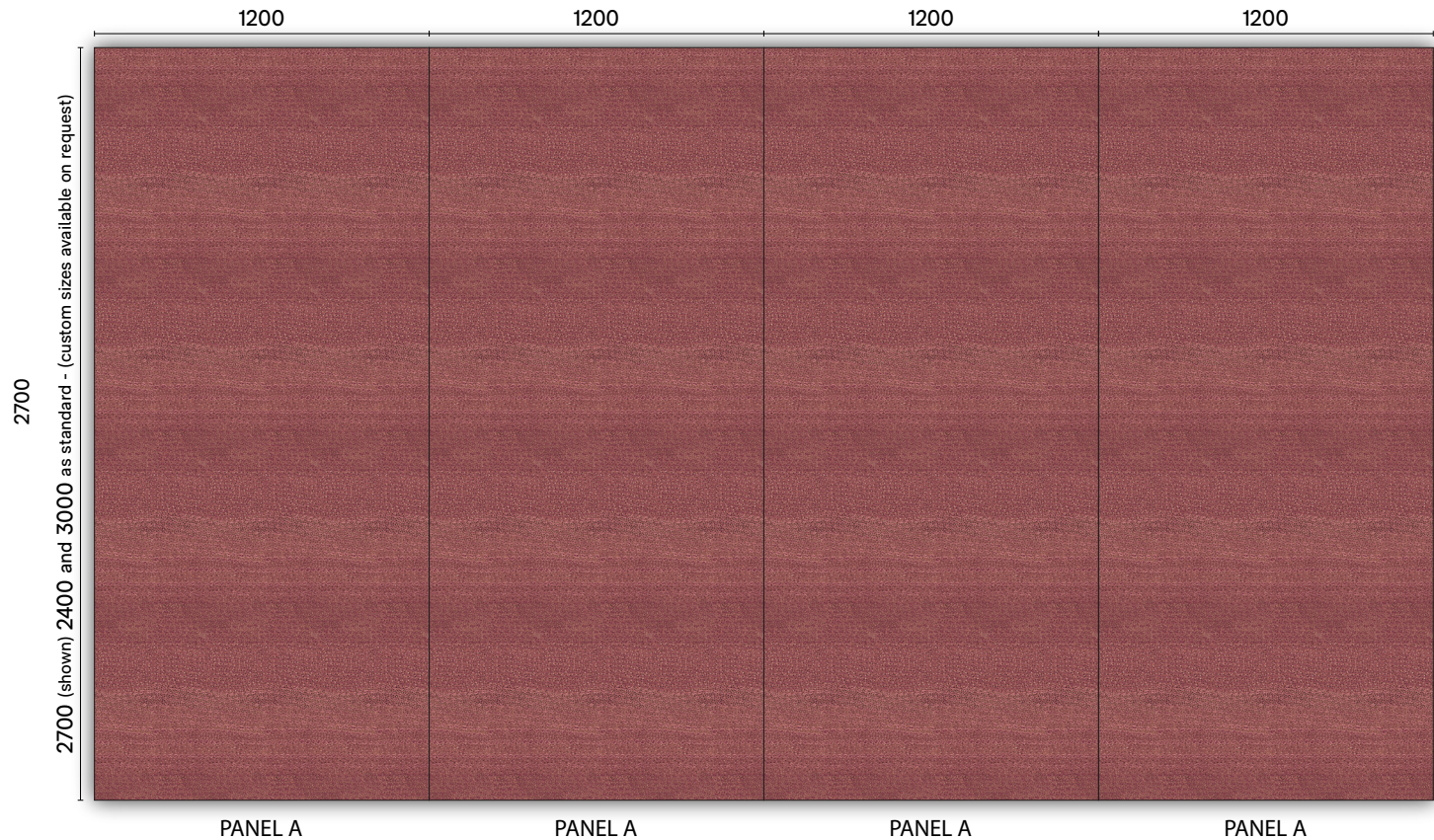
'Pippi'



'Terra'



'Obsidian'



Autex Acoustics x Willie Weston Durumu Collection

Jilamara

by Jean Baptiste Akuatimi

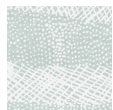
Jilamara is a Tiwi word that refers to the ochre patterning traditionally painted on the bodies of dancers and on carved poles during Pukumani ceremonies. Jilamara is unique to Tiwi Islanders.

Panel repeat:
A-B

Lengths:
2400 mm
2700 mm
3000 mm

Custom lengths available.

Colours



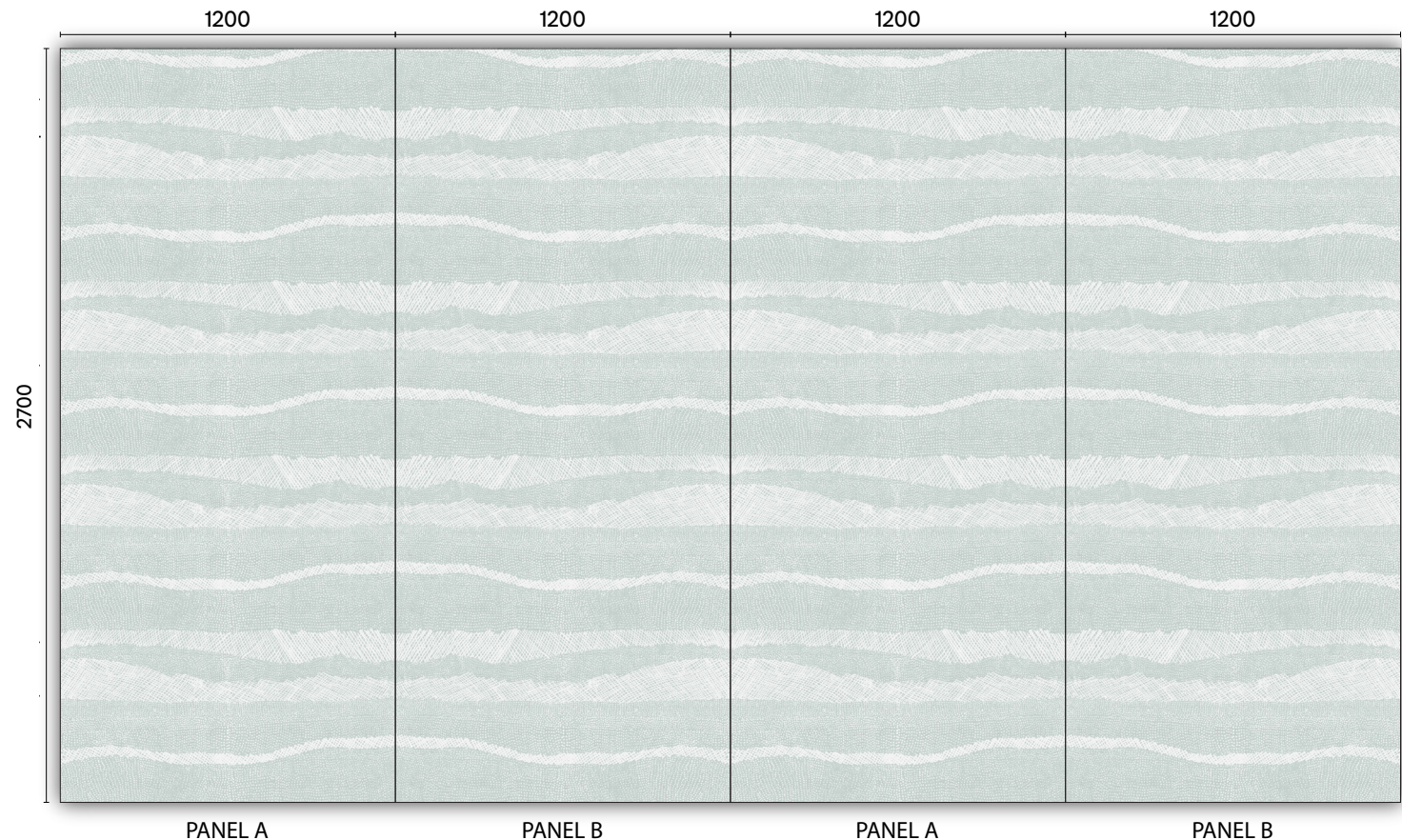
'Inlet'



'Stone'



'Sand'



Autex Acoustics x Willie Weston Ampilatwatja Collection

Native Seeds

by Jean Ngwarraye Long

Native Seeds represents the process of harvesting edible seeds from trees in the Ampilatwatja region. The seeds are used to create a dough, similar to damper which is cooked on hot coals.

Panel repeat:
A

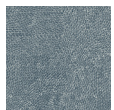
Lengths:
2400 mm
2700 mm
3000 mm

Custom lengths available.

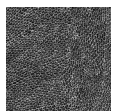
Colours



'Olive'



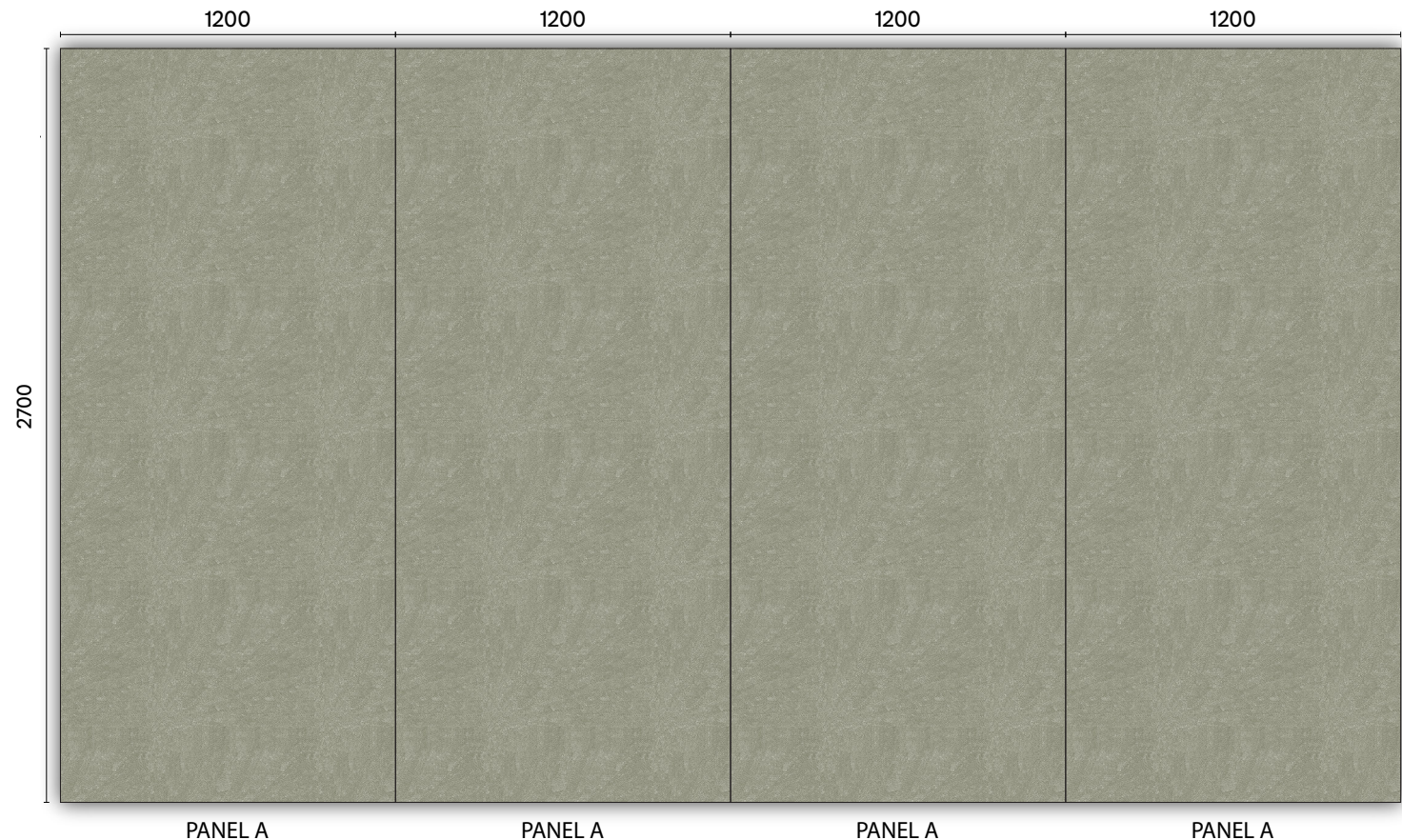
'Mineral'



'Midnight'



'Cassia'



Autex Acoustics x Willie Weston Tiwi Collection

Pandanus

by Osmond Kantilla

Pandanus represents the pointy leaves of the pandanus plant. Osmond Kantilla created this design in memory of his father.

Panel repeat:

A

Lengths:

2400 mm

2700 mm

3000 mm

Custom lengths available.

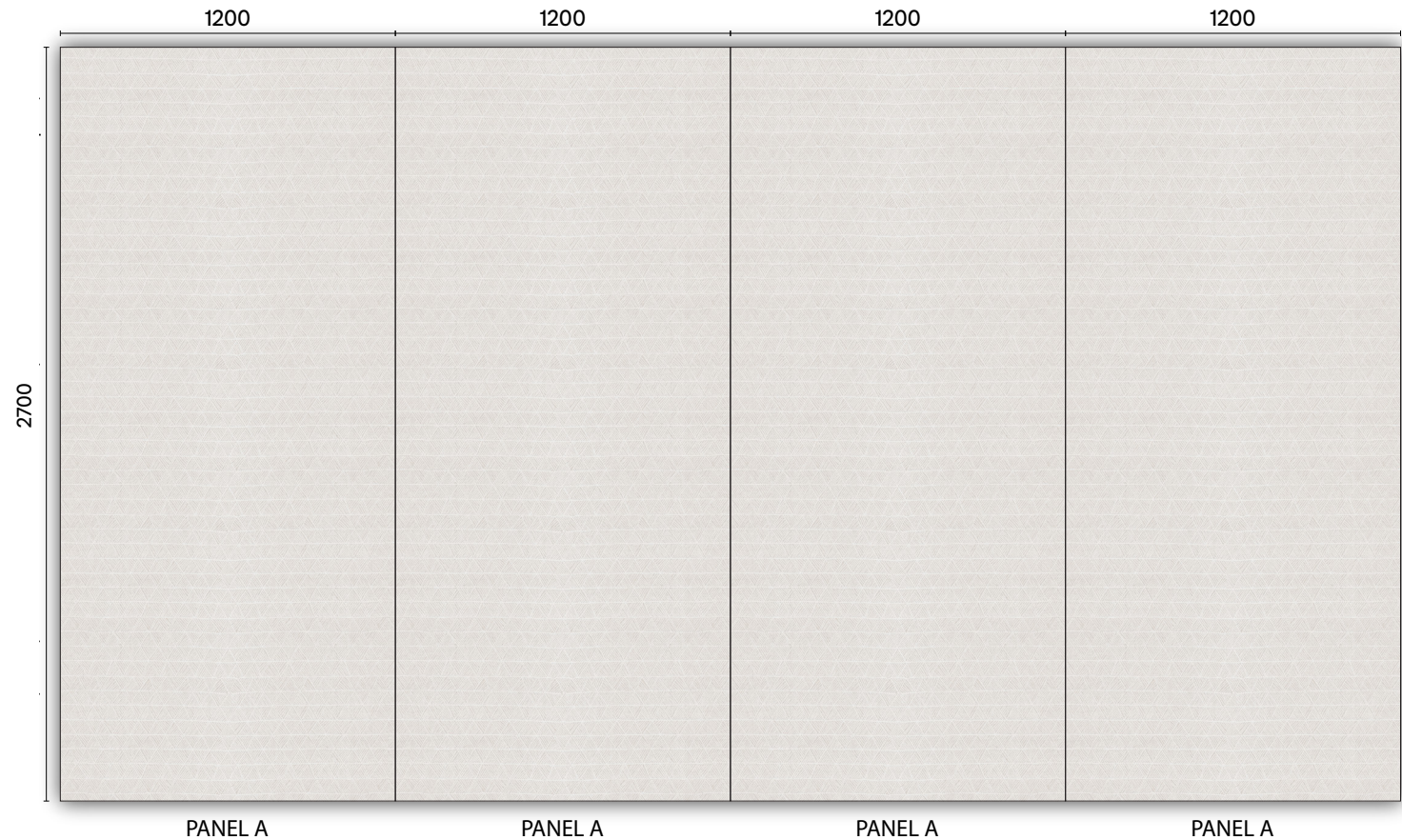
Colours



'Stone'



'Eucalypt'



Autex Acoustics x Willie Weston Ampilatwatja Collection

Sugarbag Dreaming

by Rosie Ngwarraye Ross

Sugarbag is a name used for both the honey made by the native bees and also for the sweet nectar that comes from the big yellow flowers of the 'tarrkarr' trees.

Panel repeat:
A

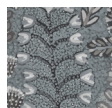
Lengths:
2400 mm
2700 mm
3000 mm

Custom lengths available.

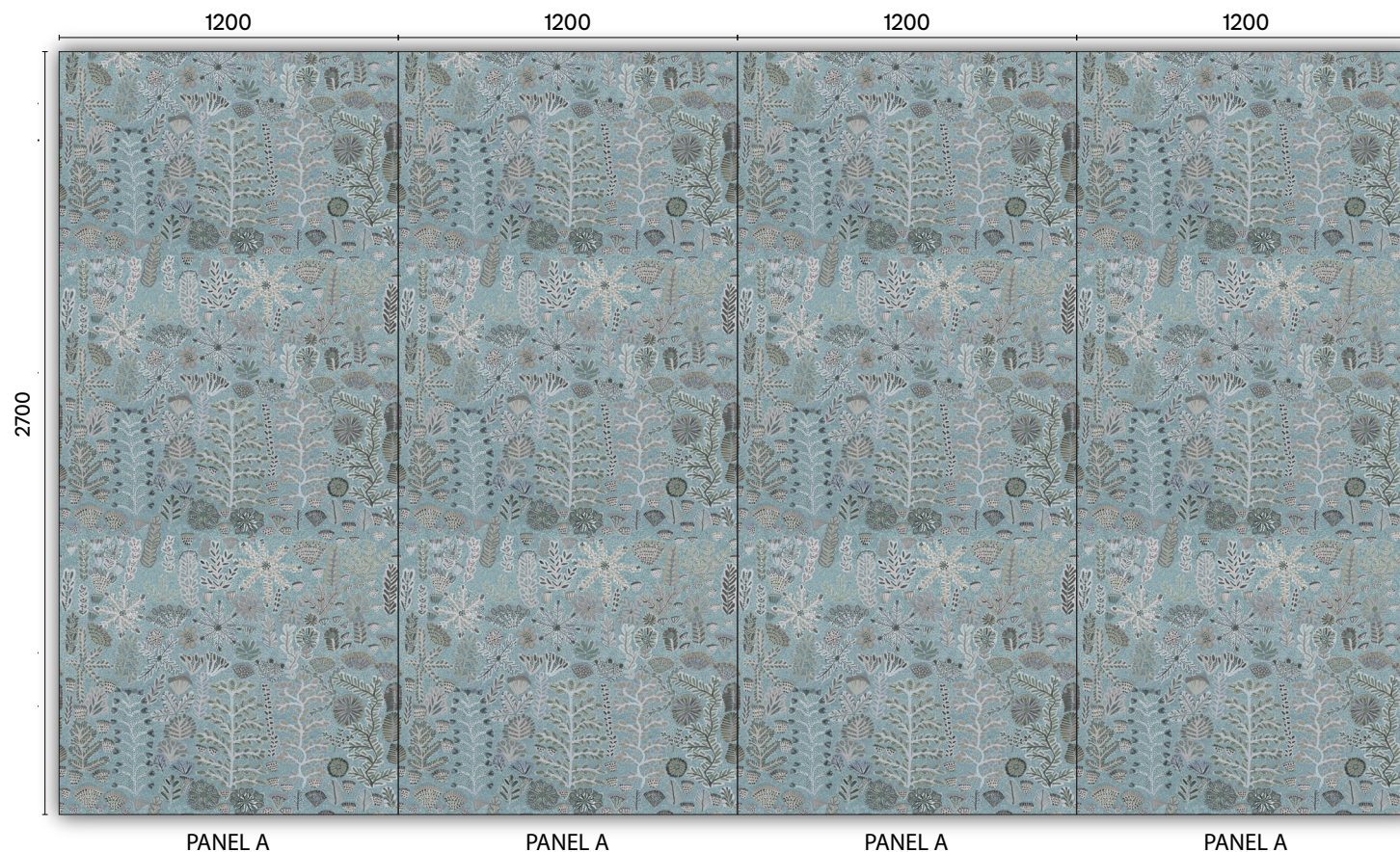
Colours



'Saltbush'



'Ghost Gum'



Autex Acoustics x Willie Weston Durmu Collection

Syaw (Fish Net)

by Annunciata Nunuk Wilson

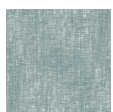
Syaw evokes nets traditionally woven with pinbin (bush vine) by the women and men of Peppimenarti to capture fish and crayfish from fresh water creeks and rivers.

Panel repeat:
A

Lengths:
2400 mm
2700 mm
3000 mm

Custom lengths available.

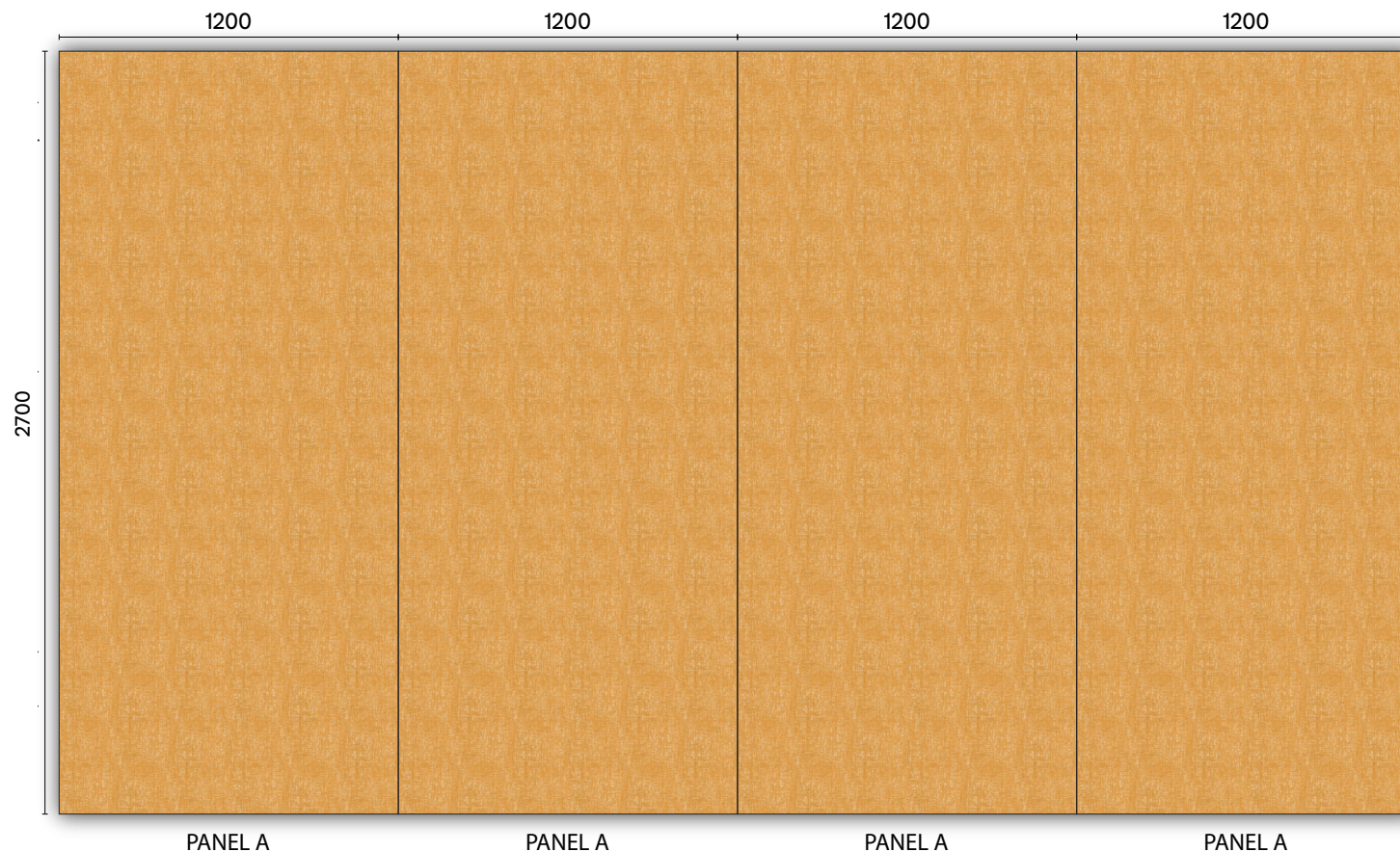
Colours



'Fish Net'



'Woolybut'



Autex Acoustics x Willie Weston Fitzroy Crossing Collection

Water Levels

by Lee-Anne Williams

Water Levels references the marks that remain on the rocks of the Fitzroy River, after flood water levels rise and fall.

Panel repeat:
A

Lengths:
2400 mm
2700 mm
3000 mm

Custom lengths available.

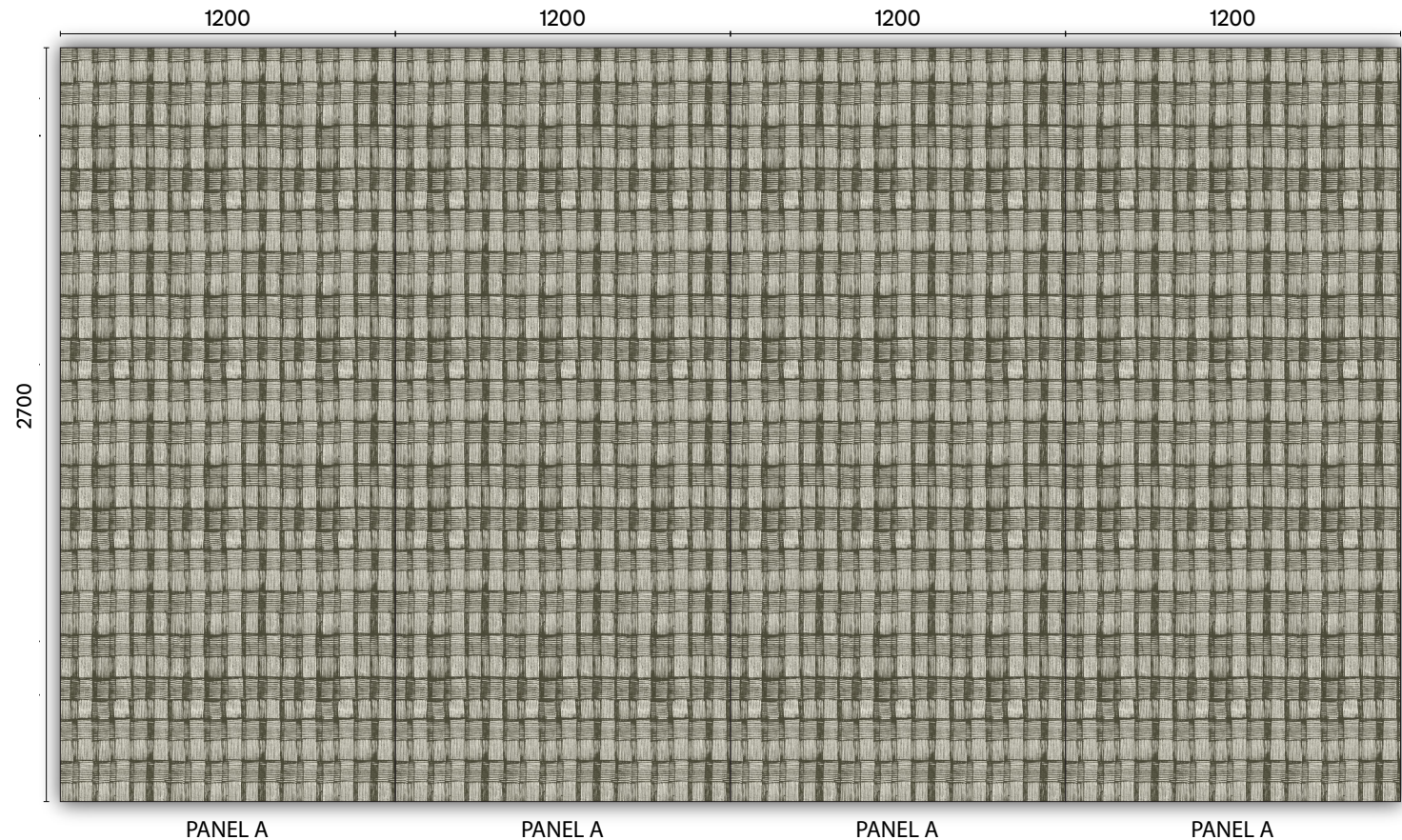
Colours



'Moss'



'Marine'



Autex Acoustics x Willie Weston Bábbarra Collection

Wak Wak

by Susan Marawarr

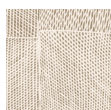
Wak Wak features rarrk (cross-hatching) and refers to the crow totem ancestor, Djimarr. Today Djimarr exists as a submerged rock at the bottom of Kurrurldul Creek, south of Maningrida.

Panel repeat:
A

Lengths:
2400 mm
2700 mm
3000 mm

Custom lengths available.

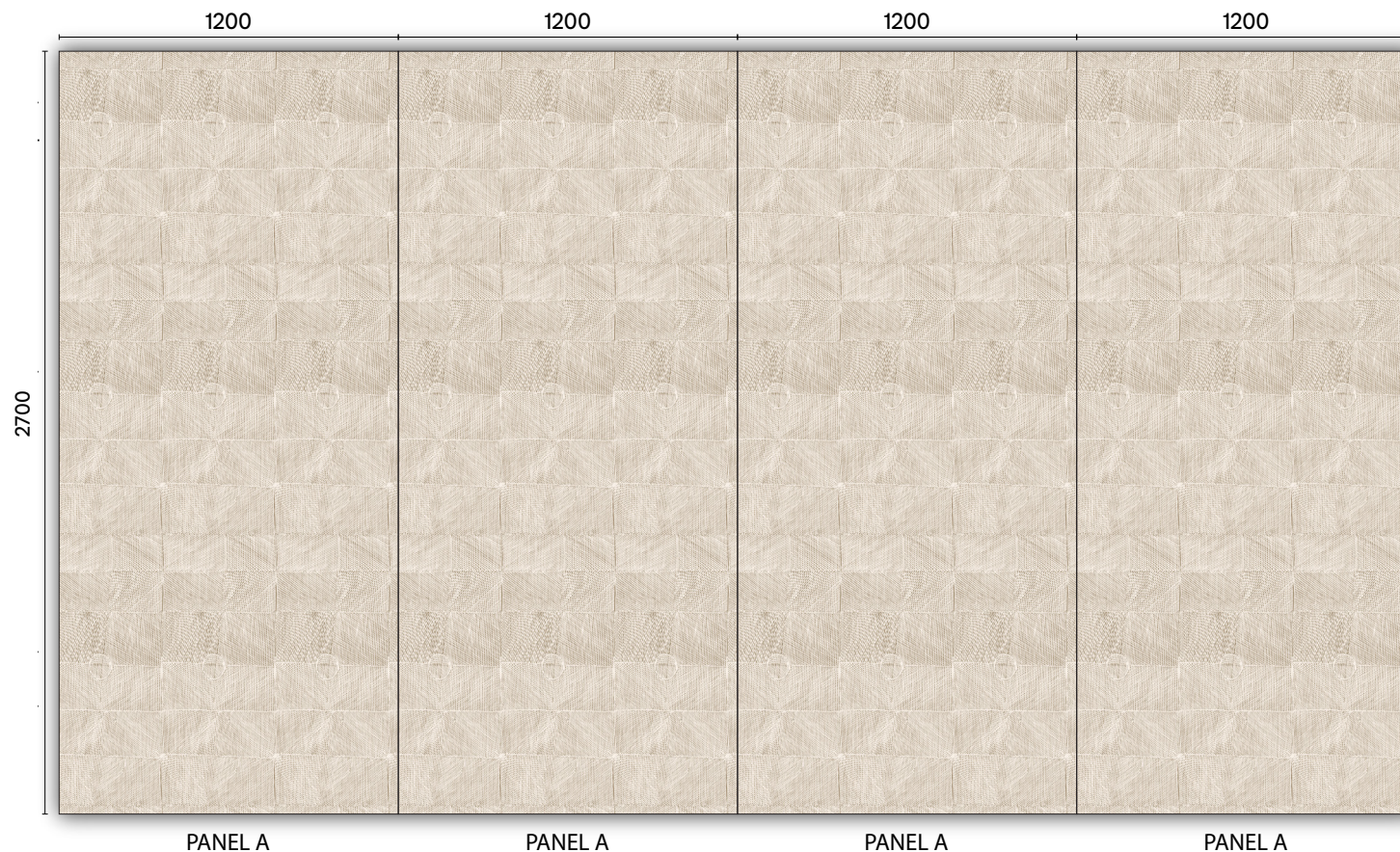
Colours



'Mudflats'



'Storm'





In everything we do

● **New Zealand**

**702-718 Rosebank Rd
Private Bag 19988
Avondale 1746, Auckland
New Zealand
Freephone 0800 428 839
Phone +64 9 828 9179
Fax +64 9 828 5810**

● **Australia**

**285 Swan St,
Richmond, VIC 3121,
Australia
Freephone 1800 678 160
Phone +61 3 9450 6700**

● **United Kingdom**

**Unit J4, Lowfields Way
Lowfield Business Park,
Elland, West Yorkshire
HX5 9DA
United Kingdom
Phone +44 0 142 241
8899**

● **United States**

**1630 Dan Kipper Drive,
Riverside, CA 92507
United States of America
Phone +1 424 203 1813**

Autex is an ISO certified organisation encompassing Quality (ISO 9001), Environmental (ISO 14001), and Health and Safety (ISO 45001). Brand names and logos are registered or unregistered trademarks owned or used under license by Autex Industries Limited or other members of the Autex Group. © Copyright 2022 Autex Industries Ltd. All rights reserved. It is the user's responsibility to determine if the product and information presented in this document is suitable for the intended application by engaging a suitably qualified consultant. The information contained in this document is correct to the best of our knowledge at the date of its publication. To verify that this document is the most current publication please check our website or contact your Autex account manager.