



YSM503



YSM101

# YUISOME

## YSM500

Tie-dye techniques have been used in textiles for many decades. The fabric is twisted while the dye is still wet to give a unique pattern that incorporates similar colour tones. TOLI have taken this process and applied it to the Yuisome carpet tile range. The end result is a stunning, random appearance that will never be replicated twice.



YSM501

YSM502

YSM503

YSM504



YSM501

YSM502

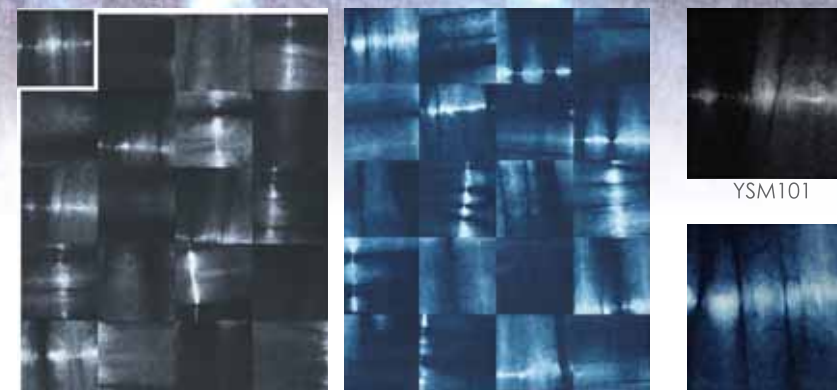
YSM503

YSM504

# YUISOME

## YSM100

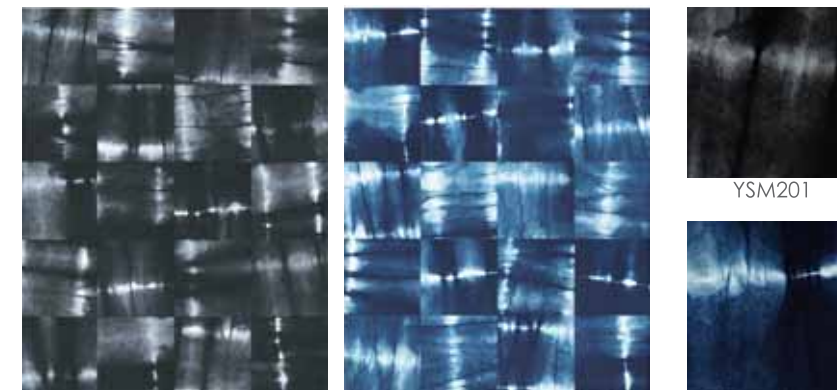
## YSM200



YSM101

YSM102

YSM102



YSM201

YSM202

YSM202

<b>YARN</b>	Yarn Dyed Nylon
<b>FINISH</b>	Cut Pile
<b>PILE WEIGHT</b>	1000gsm (29.5oz)
<b>TILE DIMENSION</b>	500mm x 500mm
<b>TOTAL THICKNESS</b>	9.0mm

### PERFORMANCE



### INSTALLATION

